

## Mobile RFID Reader with the Option to Add Barcode Scanning



Read RFID tags anywhere with the CompactFlash RFID Reader Card Series 6

- **Dual-Function** – The unique dual-function CF RFID Reader-Scan Card 6M/6P adds both RFID reading/writing AND bar code scanning capabilities to your Windows Mobile-base device
- **One-Handed Operation** – After you insert the CF RFID Reader Card into a PDA, you can operate it in one hand, leaving your other hand free to handle packages and materials for increased productivity
- **Low Power** – Socket Battery Friendly® technology reduces power consumption to maximize your PDA's battery life. The CF RFID Reader Card draws only 11 mA (36 mW) in idle mode, so you can operate longer without needing to replace or recharge your PDA's batteries

WHICH VERSION IS RIGHT FOR YOU?

<b>CF RFID Reader 6E</b> <i>Entry-Level</i>	High Frequency 13.56 MHz reader/writer
<b>CF RFID Reader-Scan Card 6M</b> <i>Mid-Range</i>	Dual-function card with an RFID reader/writer and an ultra-safe Class 1 laser bar code scanner perfect for healthcare scanning applications near patients
<b>CF RFID Reader-Scan Card 6P</b> <i>Performance</i>	Dual-function card with an RFID reader/writer and a power Class 2 laser bar code scanner suitable for demanding applications such as scanning outdoors, over long distances, or through mylar or thick glass

### HARDWARE FEATURES

- Durable card with integrated RFID reader/ barcode scanner plugs into a CompactFlash (CF) card slot with a snug, secure fit
- High Frequency 13.56 MHz reader/writer
- Approximate read range of 3.0 inches (7.6 cm), depending on tag antenna size
- Reads and writes to the most popular HF ISO15693 tags, such as ICode SLI/SL2, LRI512, my-d, Tag-It HF-I
- Reads and writes to the following proprietary HF tags: ICode 1, Tag-It HF, and PicoTag
- Reads Tag ID of Mifare and Mifare Ultralight versions A and B
- One-handed operation with a PDA improves efficiency by freeing the other hand to handle packages or materials
- Available in three performance levels to fit your business requirements
- Dual-function versions 6M/6P integrate a laser-based bar code scanner as powerful as large gun-type scanners, without the bulk
- Easy to pack and easy to maintain, with no extra batteries or power adapter required
- Battery Friendly® technology reduces power consumption, maximizing the battery life of your PDA
- One year warranty

### SOFTWARE FEATURES

- Supported by the same SocketScan™ and SDK that supports all Socket bar code scanners
- SocketScan software enters read data into any Windows application as virtual keystrokes — no custom programming required
- Reads tag IDs and/or data from selected memory blocks
- Assign a beep tone or .WAV audio file to signify a successful scan
- Easily enable/disable bar code symbologies with SocketScan Symbology Selector utility
- View the properties of any bar code, including symbology, length, and decoded data, for any of your scanner's supported symbologies
- Compatible with Windows-based development tools for custom applications
- SDK available to application developers for Windows Mobile
- Floating Trigger for Windows Mobile puts an icon on your screen that you can tap to trigger the scanner
- Demo application helps you test write, inventory and loop modes

# CompactFlash RFID Reader Card

Series 6

## Bar Codes



A3419500A

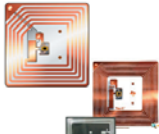


6430-00154 A



25430 73001 2

## RFID Tags



SPECIFICATIONS			
	CF RFID Reader Card 6E Entry Level	CF RFID Reader-Scan Card 6M Mid-Range	CF RFID Reader-Scan Card 6P Performance
SKU #	RF5400-542	RF5402-544	RF5405-632
RFID Frequency	High Frequency 13.56 MHz reader/writer		
HF RFID Tags Supported	ISO15693: ICode SLI/SL2, LRI512, my-d, Tag-It HF-I Proprietary: ICode 1, PicoTag, Tag-It HF ISO14443A&B (Tag ID only): Mifare, Mifare Ultralight		
Maximum RFID Read Range	Approximately 3.0 inches (7.6 cm)		
Bar Code Scanner Type	Not included	Class 1 laser	Class 2 laser
Bar Code Symbologies Decoded	None	Chinese 2 of 5, Codabar, Code 11, Code 128, Code 39, Code 93, D 2 of 5, GS1 DataBar (RSS), GS1-128 (UCC-128/EAN-128), I 2 of 5, MSI, UPC/EAN	
Bar Code Scanning Decode Distance*	N/A	1.5 to 20 inches (3.8 to 51 cm)	1.5 to 45+ inches (3.8 to 114+ cm)
Operating Temperature	-10 to +50°C (-4 to +122°F)		
Operating System Support	Windows Mobile 2003/2003SE/5.0 for Pocket PC Windows Mobile 6 Classic/Professional		
Interface Standard	CompactFlash Type II		
Included Software	SocketScan for Windows Mobile**		
Certification/ Compliance	FCC: Part 15, Class B CE: EN55024:2003 C-TICK: s.182 RoHS		
Warranty	One year		

\*Depends on symbol size, symbology, label media, W-N Ratio, scan angle

\*\*Must use SocketScan 6.6.27 or higher



"With the Socket CF RFID Reader-Scan Card 6M, VeriScan is identifying 5,000 potential medication errors every year. Studies show that medication errors cost anywhere from \$2,000 to \$5,000 each, due to increased length of stay, altered level of care and lawsuits. Eliminating those errors is key."

-Tom Ague, COO and EVP,  
St. Clair Hospital, Pittsburgh

**socket**

Sales Offices  
Corporate Headquarters:  
39700 Eureka Drive  
Newark, CA 94560 USA

Web: [socketmobile.com](http://socketmobile.com)

Phone: +1 510-933-3000

USA & Canada Toll Free: 800-552-3300

Fax: +1 510-933-3030

Online: [socketmobile.com/contact](http://socketmobile.com/contact)



© 2009, Socket Mobile, Inc. Socket, the Socket logo, Business Mobility Now!, CompactFlash RFID Reader Card, SocketScan, and Battery Friendly are registered trademarks or trademarks of Socket Mobile, Inc. Microsoft is a registered trademark of Microsoft Corporation in the United States and other countries. All other brand and product names are trademarks of their respective holders. Information is subject to change. 6450-00161J 7/2009

Business Mobility Now!™



mobile

# SoMo<sup>®</sup> 650 Handheld Computer

Standard and EB (Extended Battery) Versions

## Specification Sheet

MODEL	Standard	EB (Extended Battery)	
PHYSICAL	Dimensions	5.00 x 2.94 x 0.81 inches (127 x 74.60 x 20.6 mm)	5.00 x 2.94 x 0.98 inches (127 x 74.60 x 25 mm)
	Total Mass	6.25 oz (177 g) with battery and stylus	7.20 oz (204 g) with battery and stylus
	Display	65K colors TFT LCD, 3.5", 16 bit-per-pixel, 240 (w) x 320 (L) resolution	
	Touch Panel	Glass analog resistive touch	
	Backlight	White LED backlight	
	Battery Type	3.7V 1200 mAh Lithium Ion rechargeable	3.7V 2600 mAh Lithium Ion rechargeable
	Backup Battery	Super Capacitor to support Realtime Clock	
	Expansion Slots	CompactFlash (CF) and Secure Digital I/O (SDIO) slots: reinforced to prevent damage when dropped	
	LED Indicators	Red/Green LED for alarm, battery charging Blue/Green LED for <i>Bluetooth</i> and Wireless LAN	
	Buttons	4 front panel programmable soft buttons 2 side programmable action buttons Control hold switch	5 navigation buttons Device reset button Power on/off button
	Input Devices	Stylus (Note: touch sensitive display for stylus or fingertip)	
Connectors	Barrel connector power jack 26 pin docking connector for ActiveSync USB 1.1 host & USB 2.0 Client 2.5mm headset jack with support for both voice and stereo music		
Audio	Built-in Microphone and Speaker, voice recording capability with Notes application		
PRE-LOADED SOFTWARE	Microsoft Software	Office Mobile: Word Mobile, Excel Mobile, PowerPoint Mobile Web/Communications: Office Outlook Mobile, Internet Explorer Mobile, MSN Messenger Client Synchronization: ActiveSync Client Media: Windows Media Player 10.2 Mobile Programmable Home Screen .NET Compact Framework v2.0 Calculator	
	Socket Software*	Data Capture: SocketScan™ keyboard wedge software for Socket barcode / RFID / magnetic stripe readers and UIC683 contactless smart card reader Wireless Broadband: SoMo 650 Back Pack Utilities WLAN / <i>Bluetooth</i> : Enhanced Wi-Fi® Companion™, Connect!Agent™, Radio Manager for WM 5.0 only Cabled Communications: Modem Utilities, Ethernet Utilities	
	SocketSerial Software	Serial I/O drivers, USB-to-Serial adapter drivers, USB Ethernet Gigabit adapter drivers	
	Sprite Mobile Software	Sprite Backup (Trial version)	
PERFORMANCE	Processor	Intel PXA270 @ 624 MHz	
	Operating Systems Available	Windows Mobile 6 Classic - Worldwide English, Chinese, Dutch, Finnish, French, German, Italian, Portuguese (Brazilian/Iberian), Spanish, Swedish** Windows Mobile® 5.0 for Pocket PC - Worldwide English only	Windows Mobile 6 Classic - Worldwide English only Windows Mobile® 5.0 for Pocket PC - Worldwide English only
	Memory	128 MB SDRAM, 1 GB or 256 MB NAND FLASH (Windows Mobile 5.0 devices available only with 256 MB NAND FLASH)	
	SoMo File Store	Non-volatile memory for device applications/configurations can survive hard reset of device Features Auto-Run support, ideal for provisioning deployments	

\*SoMo devices come with Wi-Fi Companion installed. Enhanced Wi-Fi Companion works only with Windows Mobile 6 or later and is optional to install.

\*\*Not all languages available in all regions. Chinese, Swedish, Finnish, and Dutch available only through ROM upgrade DVD, SKU# SW1241-893

ENVIRONMENTAL	Operating Temperature	0° to 50° C (32° to 120° F)
	Storage Temperature	-25° to 75° C (-13° to 167° F)
	Humidity	95% non-condensing
	Drop Specification	Multiple 1 meter drops to concrete covered with vinyl
	ESD Specification	+/- 8kV air discharge, +/- 8kV direct discharge

WIRELESS	Wireless Local Area Network	IEEE® 802.11 b/g Data Rate: 1/2/5.5/6/9/11/12/18/24/36/48/54 Mbps Frequency Range: Country dependent (chan 1- 14); 2.412 to 2.484 GHz Output Power: 14.5 dBm (OFDM); 16 dBm (CCK) Antenna: Internal Cisco CCX 4.0 certified*
	Bluetooth	v2.0 + EDR Class 2 Supported Profiles: <ul style="list-style-type: none"> <li>- GAP: Generic Access Profile</li> <li>- SDP: Service Discovery Profile</li> <li>- A2DP - Advanced Audio Profile</li> <li>- AVCTP - Audio/Video Control Transport Protocol</li> <li>- AVRCP - Audio/Video Remote Control Profile</li> <li>- DUN - Dial-up Networking Profile</li> <li>- GAVDP - Generic Audio/Video Distribution Profile</li> <li>- AVDTP - Audio/Video Distribution Transport Protocol</li> <li>- HP: Headset Profile</li> <li>- HID - Human Interface Device (Host role)</li> <li>- OPP - Object Push Profile (Client and Server)</li> <li>- SPP - Serial Port Profile</li> </ul>

LEGAL	Warranty	Handheld computer: One year standard warranty Accessories (battery, cable, case, charger, etc.): 90 days SocketCare™ enhanced service program available separately
	Certification/ Compliance	FCC: Part 15, Class B Industry Canada RoHS and WEEE compliant EMI / RFI Bluetooth Certification (BQB test) Microsoft Windows Mobile 5.0, 6.1 Logo Test Certified EU/International: EN301 489-1, -17 EN61000-4-2: 1995, ESD ± 8kV air/±4kV contact NOM, COFETEL Cisco CCX 4.0 (requires Enhanced Wi-Fi Companion software)* EN61000-4-3: 1997, radiated Immunity 3V/m EN61000-4-4: 1995, EFT ± 0.55kV EN61000-4-5: 1995, Surge ± 0.5kV EN61000-4-6: 1 CE: EN Electrical Safety EN60950, UL, CSA Wi-Fi Alliance Certification USB IF Test ANATEL

PACKAGE CONTENTS	SoMo 650-E	SoMo 650 handheld computer Wall charger: AC/DC adapter, Input 100~240 V AC USB sync/power cable Full size stylus Companion CD with software and User's Guide
	SoMo 650-M	Same as SoMo 650-E plus: Desktop cradle: Simultaneous charge for docked unit and spare battery, includes USB 1.1 Host and USB 2.0 Client ports, powered from wall charger Leather carrying case 2.5mm to 3.5mm audio headset adapter Audio headset with microphone

OPTIONAL ACCESSORIES	Data Capture	Barcode / RFID / magnetic stripe readers (SD / CF card or Bluetooth wireless)
	Wireless Broadband	SoMo 650 Back Pack wireless broadband ExpressCard adapter (Novatel wireless modem not included)
	Cabled Communications	56k Modem (SD / CF card) 10/100 Ethernet (CF card)
	Charging/ Synchronization	Batteries: Standard battery, Extended battery set, Mobile Power Pack Cradles: Cradle kit, Multi-bay charger Cables: Car charger, Master USB with DC jack, USB sync cable, USB Y cable
	Protection	Screen Protector Kit FlexGuard silicone cover
	Input	Tethered Stylus
	For a full list of Socket peripherals and accessories, please visit: <a href="http://www.socketmobile.com/products/handheld-computer/accessories/">http://www.socketmobile.com/products/handheld-computer/accessories/</a>	

\* Requires Enhanced Wi-Fi Companion software, compatible with Windows Mobile 6 or later and optional to install

**SKU NUMBERS - SINGLE UNIT, STANDARD CONFIGURATION**

Model	Region	Worldwide English	Brazilian Portuguese	Spanish	French	German	Italian	Portuguese
SoMo 650-M (with cradle) Windows Mobile 6 (1 GB NAND FLASH)	N. America	HC1411-1208	HC1439-1236	HC1443-1240				
	EMEA	HC1412-1209		HC1441-1238	HC1433-1230	HC1431-1228	HC1435-1232	HC1437-1234
SoMo 650-E Windows Mobile 6 (1 GB NAND FLASH)	N. America	HC1413-1210	HC1440-1237	HC1444-1241				
	EMEA	HC1414-1211		HC1442-1239	HC1434-1231	HC1432-1229	HC1436-1233	HC1438-1235
SoMo 650-M (with cradle) Windows Mobile 6 (256 MB NAND FLASH)	N. America	HC0600-1000	HC0610-1010	HC0615-1015				
	EMEA	HC0605-1005		HC0640-1040	HC0620-1020	HC0625-1025	HC0630-1030	HC0635-1035
SoMo 650-E Windows Mobile 6 (256 MB NAND FLASH)	N. America	HC0602-1002	HC0612-1012	HC0617-1017				
	EMEA	HC0607-1007		HC0642-1042	HC0622-1022	HC0627-1027	HC0632-1032	HC0637-1037
SoMo 650-M (with cradle) Windows Mobile 5.0	N. America	HC0650-738						
	EMEA	HC0652-769						
SoMo 650-E Windows Mobile 5.0	N. America	HC0654-771						
	EMEA	HC0657-774						

**SKU NUMBERS - SINGLE UNIT, EXTENDED BATTERY**

Model	OS	Language	NAND FLASH	Region	SKU Number
SoMo 650EB-M (with cradle)	Windows Mobile 6	Worldwide English	1 GB	North America	HC1419-1216
				EMEA	HC1420-1217
			256 MB	North America	HC1401-1172
				EMEA	HC1403-1174
SoMo 650EB-E	Windows Mobile 6	Worldwide English	1 GB	North America	HC1417-1214
				EMEA	HC1418-1215
			256 MB	North America	HC0686-1087
				EMEA	HC0687-1088

**SKU NUMBER - SINGLE UNIT, UPGRADE DVD**

Model	OS	Languages	Region	SKU Number
SoMo 650 Upgrade DVD	Windows Mobile 6	Chinese Dutch English (Worldwide) Finnish French Italian German Spanish Swedish Portuguese (Brazilian) Portuguese (Iberian)	All	SW1241-893



**Sales Offices**

**Corporate Headquarters:**  
39700 Eureka Drive  
Newark, CA 94560 USA

**Web:** socketmobile.com

**Phone:** +1-510-933-3000

**USA & Canada Toll Free:** 800-552-3300

**Fax:** +1-510-933-3030

**Online:** socketmobile.com/contact

© 2007-2009 Socket Mobile, Inc. Socket, the Socket logo, SoMo, Enhanced Wi-Fi Companion, SocketScan, Connect!Agent, Serial I/O Card, and Business Mobility Now! are registered trademarks or trademarks of Socket Mobile, Inc. Microsoft is a registered trademark of the Microsoft group of companies. The Bluetooth word mark and logos are owned by the Bluetooth SIG, Inc. and any use of such marks by Socket Mobile, Inc. is under license. Wi-Fi is a registered trademark of the Wi-Fi Alliance. All other brand and product names are trademarks of their respective holders. 6450-001500 11/2009